



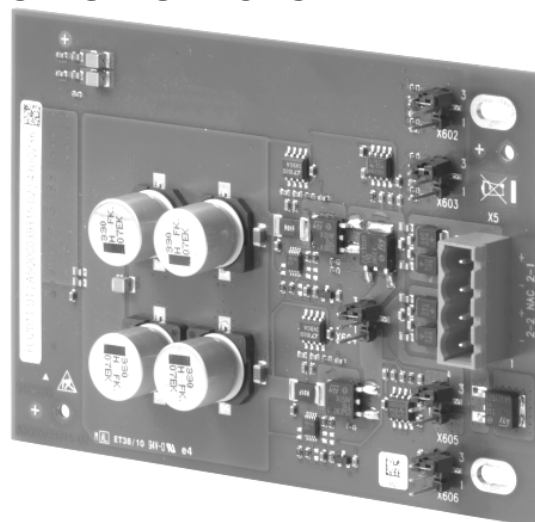
Cerberus PRO Fire Safety

NAC Expansion Module

Model FCI2011-U1

ARCHITECT AND ENGINEER SPECIFICATIONS

- Adds notification appliance circuits (NACs) to the Model FC922 and the Model FC924 fire alarm control panels (FACPs)
- One (1) 'Class A' or two (2) 'Class B' NACs
- Supports horns, strobes, and horn / strobes synchronization
- Up to 3 Amps load per output
- Monitors for open-line and short-circuit conditions
-  UL 864 9th Edition Listed,  ULC Listed; FM, CSFM and NYC Fire Dept. Approved



Product Overview

The notification-appliance circuit (NAC) expansion module (Model FCI2011-U1) is an optional module that is connected to the peripheral boards (Model FCI2016-U1 or Model FCI2017-U1), providing additional NACs to the 252-point and 504-point addressable fire systems, respectively.

One (1) 'Class A' or two (2) 'Class B' NACs are provided with the following Cerberus PRO systems:

- Model FC922 (252-point)
- Model FC924 (504-point)


Each NAC is rated at 3 Amps.

Each NAC expansion module, which is monitored for open-line and short-circuit conditions, is FM (#3010); FDNY (#6104) and CSFM (#7165-0067:0259) Approved.

The programming software is held in flash electrically erasable programmable read-only memory (EEPROM).

Cerberus™ PRO
Fire Safety & Security Products

Temperature and Humidity Range

Model FCI2011-U1 is  UL 864 9th Edition Listed for indoor dry locations within a temperature range of 120+/-3°F (49+/-2°C) to 32+/-3°F (0+/-2°C) and a relative humidity of 93+/-2% at a temperature of 90+/-3°F (32+/-2°C).

Related Documentation

Product	Data Sheet Number
Cerberus PRO Peripheral Board [Model FCI2016-U1]	9802
Cerberus PRO Peripheral Board [Model FCI2017-U1]	9802

Details for Ordering

Model Number	Part Number	Description
FCI2011-U1	S54400-A54-A1	NAC Expansion Module

9808

NAC Expansion Module

Technical Data

Electrical Ratings	Alarm current	3.0A, max. per circuit
	Supervisory current	1mA, max., typical
	NAC rating	for 'Special Application'
	Voltage	24VDC, nominal
Connection Terminals	Design	Removable terminal blocks
	Admissible cable cross-section	12 – 18 American Wire Gauge (AWG)
Physical Properties	Model FCI2011-U1 Dimensions: { W -x- H -x- D }	4.72" -x- 3.23" -x- 0.71" (12 cm. -x- 8.2 cm. -x- 1.8 cm.)
	Model FCI2011-U1 Weight:	0.75 Lbs. (341 g)

SIEMENS Cerberus™ PRO

Siemens Industry, Inc. – Building Technologies Div.
 8 Fernwood Road • Florham Park, NJ 07932
 Tel: (973) 593-2600 • Fax: (908) 547-6877
 Web: www.USA.Siemens.com/Cerberus-PRO

NOTICE — The information contained in this data-sheet document is intended only as a summary, and is subject to change without notice. The devices described here have specific instruction sheets that cover various technical, limitation and liability information.

Copies of these instruction sheets and the *General Product Warning and Limitations* document, which also contains important information, are provided with the product and, are available from the Manufacturer.

Information contained in these documents should be consulted before specifying or using the product. For further information or assistance concerning particular problems contact the Manufacturer.